

# Broken Box Mime Theater

*Destination: Everywhere*



Part of the 2023 Philadelphia Children's Festival



# Welcome!

Hi! Broken Box Mime Theater looks forward to sharing their show, *Destination: Everywhere*, with you.



This is a **Visual Story** that contains information about the show, the theatre, the performers, and Broken Box Mime Theater (BKBX). Feel free to use it as a family or school group to prepare for your trip to the theatre, print it to follow along during your visit, or pick up a copy in person when you arrive.

Thank you and enjoy!

***Destination: Everywhere***  
**Performances:**

- Saturday, May 20 at 3:00 PM
- Sunday, May 21 at 1:00 PM
- Monday, May 22 at 10:00 AM
- Monday, May 22 at 12:30 PM

**Show Run Time:**

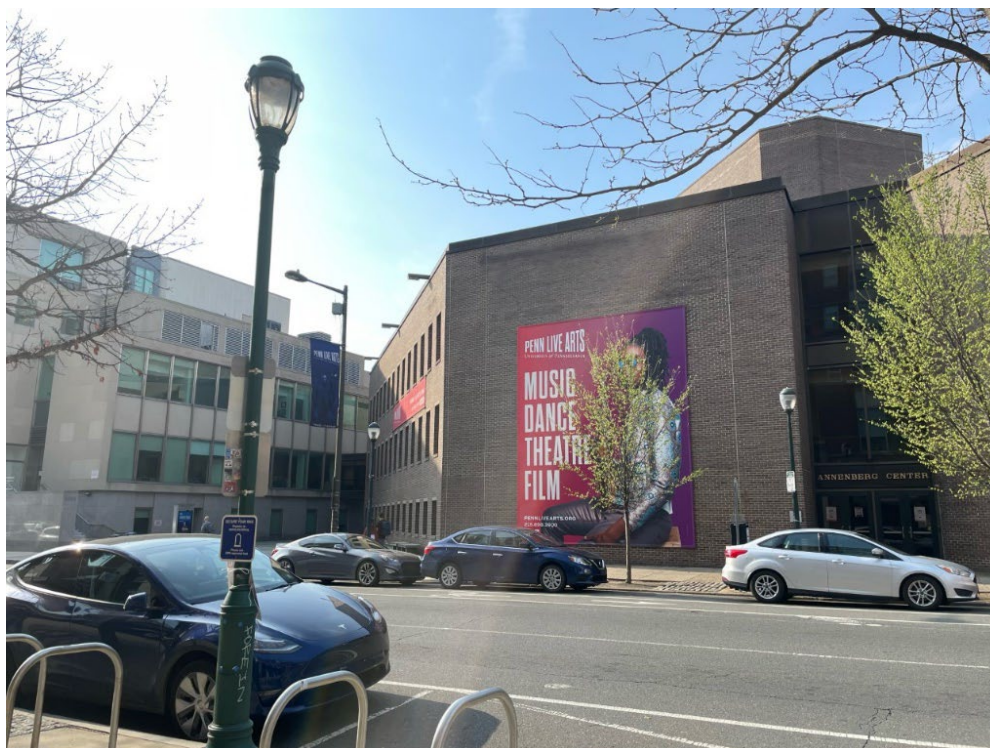
Approximately 1 hour with no intermission.



## Location: Annenberg Center for the Performing Arts

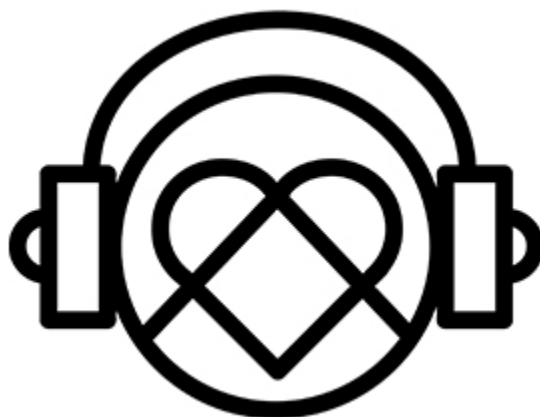


**Address:** 3680 Walnut Street, Philadelphia, PA 19104



## Accessibility

Annenberg Center for the Performing Arts is a sensory-inclusive certified venue through KultureCity.



Sensory bags, weighted lap pad, quiet areas, and headphone zones are available.

Other accessibility offerings include:

- Convenient curb cuts close to the entrance for wheelchair and mobility device accessibility.
  - Elevator access to each floor.
- Wheelchair-accessible restrooms available on the Main Lobby level and Studio Lobby level
  - Assisted listening devices are available.

**The following pages include some photos of what to expect when you come to see the performance.**

## Annenberg Center from Walnut Street



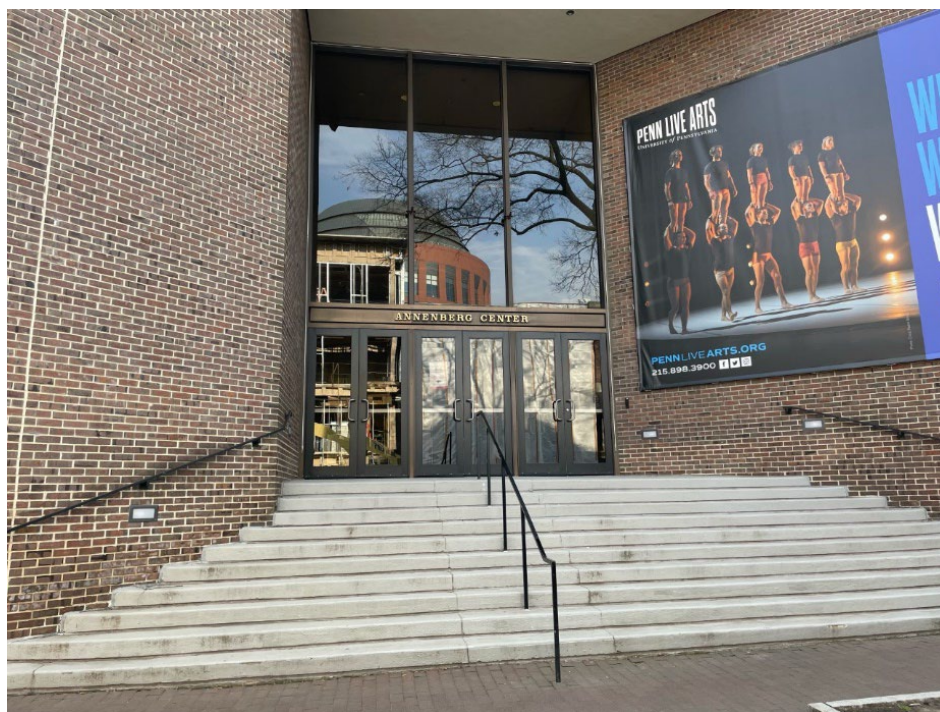
## Stairs leading to Annenberg Center Outdoor Plaza (from Walnut Street and Balder Court)



## Main Entrance (off Annenberg Center Outdoor Plaza)



## 37th Street Entrance (off Walnut and 37th Streets)



(This is the primary entrance for Monday and Tuesday performances.)

## Accessible Entrance (off Balder Court)



For a barrier-free entry, pass through Balder Court with the digital display case, across from the Inn at Penn on Walnut Street, between 36th and 37th Streets. At the foot of the staircase, there is a double-door ADA-accessible entrance. Please ring the bell for assistance.

You will be greeted by an usher, who will show you to the elevator and take you to your destination.

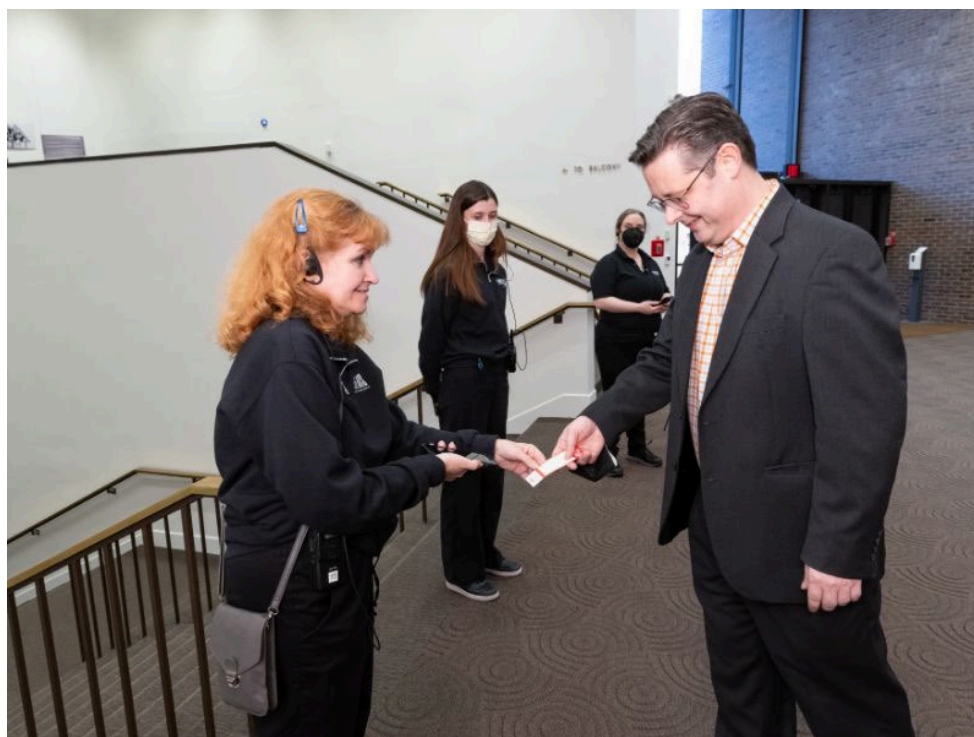


## Box Office (located in Main Lobby)



Tickets may be purchased or picked up at the Box Office windows. Print at home and mobile ticketing is also available.

Ushers will scan tickets on your way into the theatre.



## Prince Theatre Lobby



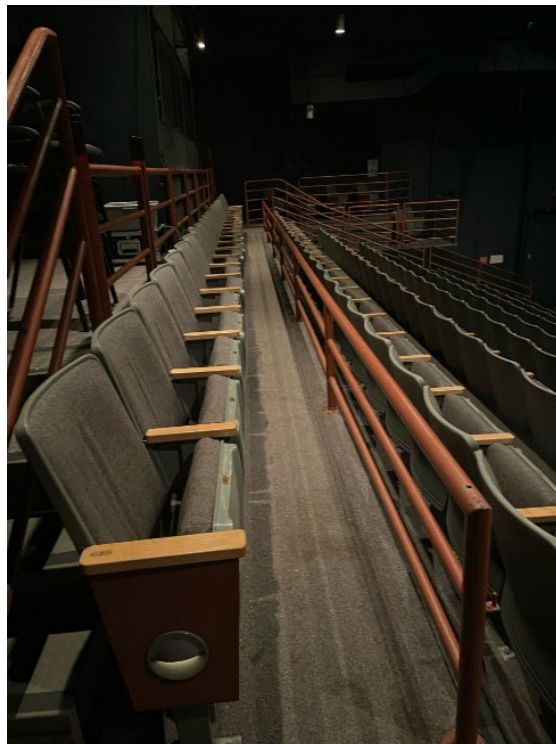
***Destination: Everywhere*** will take place in the Prince Theatre.

There may be chairs, tables, trashcans, and signs in the lobby space of the Prince Theatre.

## Prince Theatre Stage



## Prince Theatre Seating (Technology Row for Saturday)



## Quiet Area



If you need to take a break during the show, you can visit the Quiet Area.

## Who Will I See at the Theatre?

**Welcoming Crew:** This is the group of people who will help you and the other audience members find seats and answer any questions. They include:



**Becky**

Emcee of the Show



**Tasha**



**Esti**

Stage Manager

An “Emcee” guides you through the show, with words!

**Mimes:** These are the performers, who will talk when you arrive, but as soon as they finish their make-up, they’ll act everything out without words. They include:



**David**



**Géraldine**



**Regan**



**Ishmael**

## Who Will I See At The Theatre? (Cont'd)



Ushers at the Annenberg Center usually wear black polo shirts.

During the Children's Festival, all staff will wear red t-shirts.



**Front**



## How Should I Act at the Show?

You should feel comfortable doing whatever you need to when you are at this show. You are welcome to react to whatever you see, such as clapping or laughing if something is funny. You can also talk to the people sitting near you if you want to discuss anything. Sometimes Becky, the Emcee, will invite you to participate, either by using your words or by coming on stage. This is the only time you're invited onstage during the show. If you need to take a break at any time, feel free to walk through the doors you entered and hang out in the lobby.



People of all ages are invited to see the show, including babies, kids, and adults. Everyone is welcome!

## What Happens During the Show?

**What is the Show About?** The show is made up of stories and games that are acted out by the mimes without words.



Music will play during each story, and the lights will change a bit to help tell the story, too. A list of all the stories will be handed to you on a written program when you enter the theatre. Each story and game has a title, which Becky will read before it begins. Here she is holding the sign for “Date Night,” which is a story about a superhero who goes on a date!



### **What Happens After the Show?**

After the show, the Mimes will take a short break (about 1 minute) and then they will come back out to conduct a brief “how to mime” workshop. After everyone exits the theatre, you

can meet the Mimes and take pictures with them in the lobby. They will still be wearing their white makeup, so they will not talk, but you can talk to them. That's it!



**We can't wait to have you at the show!**

Have additional questions **OR** want to meet the mimes privately when you arrive? Email us at [brokenboxmime@gmail.com](mailto:brokenboxmime@gmail.com).

Accessibility is important to us; let us know what you need!

## **About**

### ***What Is a Mime?***

A mime is an actor who performs without using props, sets, costumes, or words. They use their faces, hands, and bodies to show the story. This includes who they are, where they are, and what they are doing. The mimes of Broken Box Mime Theater wear white paint and black lines on their faces to create a mask. They wear all black

clothing and black shoes. Occasionally, they use a black block or chair if they need it to help tell the story.

### ***What Is Broken Box Mime Theater?***

Broken Box Mime Theater (BKBX) is an NYC-based non-profit founded in 2011 that collaboratively creates original, contemporary plays through mime. Set to lights and music, our pieces range from realistic to metaphorical, heart-wrenching to hilarious, cinematic to intimate and everything in between, held together by the belief that great theatre requires little ornamentation, only great vision. Our children's programming produces shows under the name *BKBXKids!*, and we teach workshops and classes to students of all ages throughout NYC and abroad. For more: [www.brokenboxmime.com](http://www.brokenboxmime.com)

### ***Visual Story Created By...***

Esti Bernstein, Tasha Milkman, Becky Baumwoll, and Matt Zambrano with guidance from Penn Live Arts at the Annenberg Center for Performing Arts.

Photos by Esti Bernstein, Bjorn Bolinder, Timothy Liu, Mark Garvin, and Willa Courtney.

Have feedback? We'd love to hear from you:

[brokenboxmime@gmail.com](mailto:brokenboxmime@gmail.com).