

The background of the entire page is a vibrant sunburst pattern. The left half of the image is a deep red, and the right half is a rich purple. Radiating from the center are numerous lines of varying widths, creating a starburst effect. In the center of the image, an aerialist is suspended on a thick rope. The aerialist is wearing a flowing, orange-red dress and is in a dynamic pose, with one leg extended and arms holding the rope. The overall aesthetic is dramatic and artistic.

FY22 IMPACT REPORT

PENN LIVE ARTS
UNIVERSITY of PENNSYLVANIA

“AN ARTIST’S DUTY IS TO REFLECT THE TIMES.”

– Nina Simone



Dorrance Dance in *Basses Loaded*. Photo by Stephanie Berger.



DEAR FRIENDS,

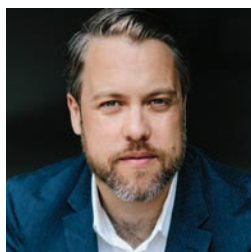
At Penn Live Arts, it is a time of transition, reflection, and new beginnings. The last few years have rearranged our lives, and they have impacted our role as a performing arts presenter, too. From launching a digital series of livestreamed performances to curating immersive outdoor performing arts experiences across the Philadelphia region, the 21/22 season saw us explore new ways of fulfilling our mission to connect diverse audiences with visionary artists and innovative ideas.

Now, as we celebrate our 50th anniversary, we commemorate our past while looking to the future of performing arts at Penn. Our 22/23 season is filled with extraordinary world and Philadelphia premieres, local debuts, commissioned works, and amazing artists from around the globe. It is also an exciting time for Penn as we welcome our new president, Liz Magill, this fall. Together with our Penn and broader community, we look to the arts in this transitory moment as we return to the excitement of gathering again. We know that the arts heal, and that, as Nina Simone proclaimed, “an artist’s duty is to reflect the times.” As always, our artists are creating work that helps us interpret and process current events, a service that is more critical than ever.

Equally important is our visionary community of supporters. Your philanthropy has demonstrated your deep commitment to the transformative artistic experiences we provide to Penn and Philadelphia. You have come forward for the performing arts when it mattered most, and that has made all the difference. Thank you for playing a leading role in ensuring the next 50 years of Penn Live Arts.

Gratefully,

Christopher Gruits



Top: Jayanthi Kumares, a 21/22 season artist.
Bottom: Alarm Will Sound performs at Morris Arboretum.

OUR MISSION

As the University of Pennsylvania’s home for the performing arts, **Penn Live Arts** connects diverse audiences with visionary artists and innovative ideas, engaging both the University and the greater Philadelphia community in transformative artistic experiences.

ACTIVATING UNCONVENTIONAL SPACES
WITH THE PERFORMING ARTS

ACTIVATING



Alarm Will Sound performs *Ten Thousand Birds* at Morris Arboretum. Photo by Mark Garvin.

ENGAGING

ENGAGING AUDIENCES
WITH THEMES REFLECTIVE
OF OUR TIME

SEPTEMBER 2022

SUN	MON	TUE	WED	THU	FRI	SAT
28	29	30	31	1	2	3
4	5 LABOR DAY	6	7	8	9	10
11	12	13	14	15	16 COMMUNITY OPEN HOUSE 3:30 PM	17 COMMUNITY OPEN HOUSE 11:00 AM BLIND BOYS OF ALABAMA 8:00 PM
18	19	20	21	22	23	24
25	26	27	28	29	30 KARDEMIMMIT 8:00 PM	1

Outdoor performances anchored Penn Live Arts' reopening strategy after 18 months without in-person audiences. In summer 2021, we co-presented three outdoor performances by The Crossing at locations throughout the region, from The Woodlands to Awbury Arboretum to Bowman's Hill Wildflower Preserve. Inspired by current events, the series featured pieces reflecting on the pandemic, the natural world, and the life of Breonna Taylor.

Then, in September, we opened our 21/22 season with an outdoor program at Morris Arboretum by Alarm Will Sound. The new music ensemble performed John Luther Adams' *Ten Thousand Birds*, a collection of pieces based on native birdsong and migration patterns. We collaborated with the Sachs Program for Arts Innovation to provide free tickets and transportation for more than 40 Penn students to venture out to the Arboretum to experience the piece.

The fall also kicked off our newly launched film series under the leadership of Maori Holmes, PLA Curator-at-Large for Film. Building upon the environmental theme of *Ten Thousand Birds*, the series began with *On The Environment*, a collection of films that address climate change from a variety of perspectives and locations. Throughout the season, our film series covered themes such as work by Arab women, the impact of the global pandemic, and a focus on gender issues.

CHAMPIONING

LEADING CREATIVE
COLLABORATION ACROSS
THE UNIVERSITY

CHAMPIONING THE
PERFORMING ARTS AT PENN

LEADING



Lila Downs, inaugural Brownstein Artist-in-Residence.

OCTOBER 2022

SUN	MON	TUE	WED	THU	FRI	SAT
25	26	27	28	29	30	1
2	3	4	5	6	7	8
MACHINE DE CIRQUE <i>La Galerie</i> 7:00 PM					PILOBOLUS 8:00 PM	OUR VOICES, OUR TIME: ONE-ACT PLAY FESTIVAL Negro Ensemble Company 2:00 PM 8:00 PM PILOBOLUS 2:00 PM 8:00 PM
9	10	11	12	13	14	15
	INDIGENOUS PEOPLES' DAY				PAM TANOWITZ DANCE 8:00 PM	PAM TANOWITZ DANCE 2:00 PM 8:00 PM
16	17	18	19	20	21	22
LAKECIA BENJAMIN & PURSUANCE with Special Guests 7:00 PM					PENN PRESIDENTIAL INAUGURATION PENN HOMECOMING WEEKEND	RAVI COLTRANE QUINTET The Music of John & Alice Coltrane 8:00 PM PENN HOMECOMING WEEKEND
23	24	25	26	27	28	29
BRANDEE YOUNGER 7:00 PM						
30	31					
BÉLA FLECK & ABIGAIL WASHBURN 7:00 PM						

Postponed for more nearly two years, the inaugural Brownstein Residency for Artistic Innovation brought Mexican global superstar and Grammy® Award-winner Lila Downs to Penn Live Arts in April. A bi-annual residency, the program links notable visiting artists to the Penn and Philadelphia communities with a focus on interdisciplinary work and experiences for broad audiences.

In addition to her public performance, the singer participated in a discussion moderated by Elizabeth Bynum, a joint PhD candidate in Music and Anthropology. We partnered with the Center for Latin American and Latinx Studies and Casa Latina to offer Penn students and faculty exclusive access to this conversation on art, justice, immigration, and gender.



Photo by Mark Garvin.

ENRICHING

ENRICHING THE PERFORMING ARTS
LANDSCAPE IN PHILADELPHIA



ELEVATING EMERGING AND
RENOWNED ARTISTS IN MYRIAD
PREMIERES AND DEBUTS

ELEVATING

Mark Morris Dance Group in *Pepperland*. Photo by Robert Torres.

NOVEMBER 2022

SUN	MON	TUE	WED	THURS	FRI	SAT
30	31	1	2	3	4 BALLET HISPÁNICO 8:00 PM	5 BALLET HISPÁNICO 2:00 PM 8:00 PM
6 FALLING OUT OF TIME 7:00 PM	7	8	9	10	11 PENN FAMILY WEEKEND	12 PENN FAMILY WEEKEND TERENCE BLANCHARD & ANDREW F. SCOTT Gordon Parks: An Empathetic Lens 8:00 PM
13 PENN FAMILY WEEKEND	14	15	16	17	18 SOWETO GOSPEL CHOIR 8:00 PM	19
20	21	22	23	24 THANKSGIVING	25	26
27	28	29	30	1	2	3

The 21/22 season renewed our profile as an innovative presenter of groundbreaking work. In total, we presented two world premieres, 12 Philadelphia premieres, and five PLA debuts across dance, cirque, music, and film.

Mark Morris Dance Group (MMDG) and MOMIX both graced the Julia Lang Mally, W'83 Stage, bringing works never before seen in Philadelphia. In May, MMDG performed the Philadelphia premiere of *Pepperland*, set to live music by Ethan Iverson based on The Beatles' *Sgt. Pepper's Lonely Hearts Club Band* album. And in June, MOMIX thrilled with *Alice*, a wildly imaginative, fantastical wonderland that left audiences in awe.

Other notable premiere performances included The Crossing's *A House Besieged* and Carols After a Plague, Rennie Harris' *LIFTED*, and Circa's *Humans 2.0*, and the Penn Live Arts debuts of Dorrance Dance and jazz vocalist Cécile McLorin Salvant.

CONNECTING STUDENTS WITH DISTINCTIVE ARTISTIC EXPERIENCES

CONNECTING



Penn's Dischord A Cappella performs at the December 10, 2021 Carnegie Student Showcase in New York. . Photo by Eddie Marengo.

CELEBRATING

CELEBRATING THE DIVERSITY OF PERFORMING ARTS AT PENN

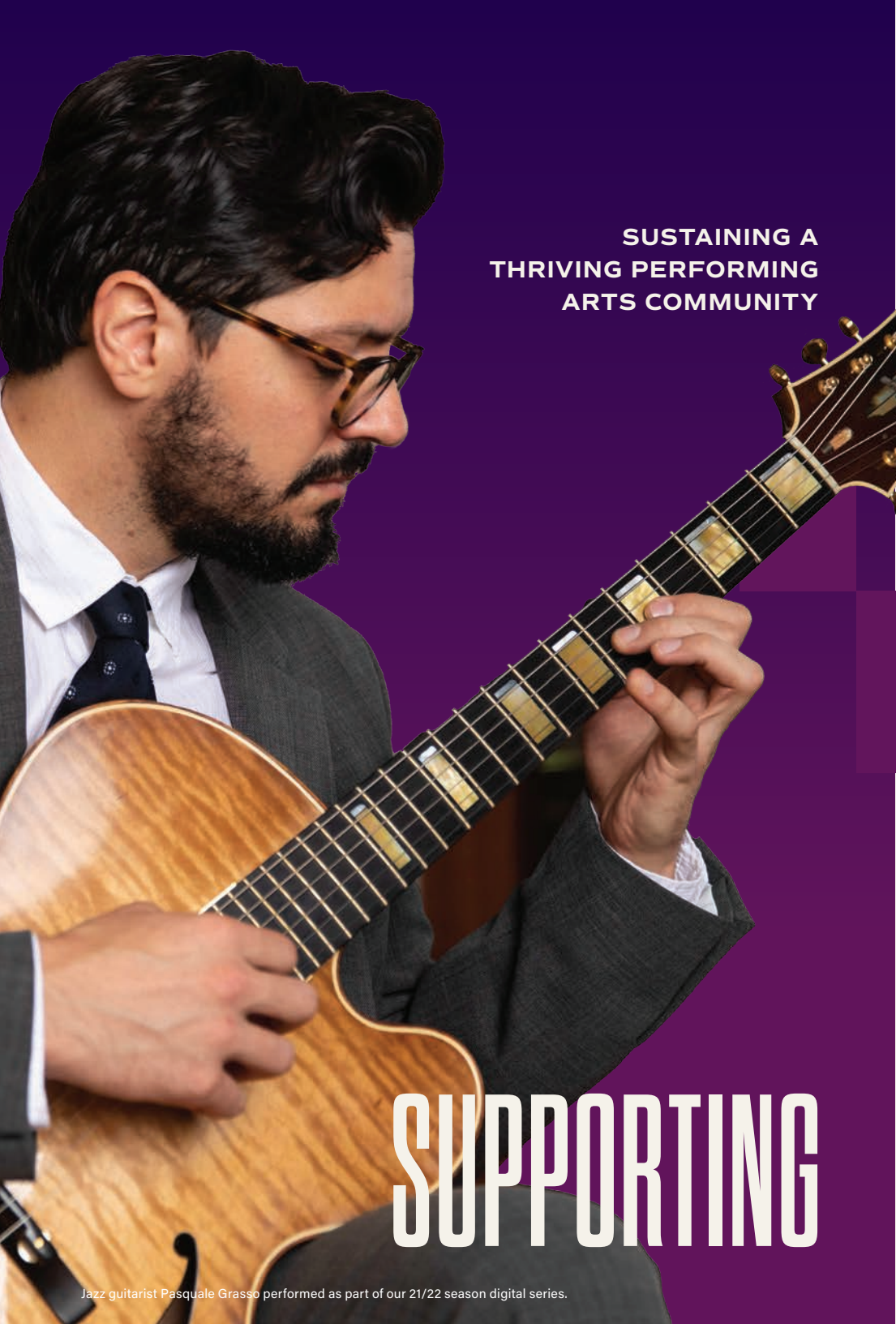
DECEMBER 2022

SUN	MON	TUE	WED	THU	FRI	SAT
27	28	29	30	1	2	3
A TOAST TO DEAR OLD PENN Carnegie Hall 7:30 PM						
4	5	6	7	8	9	10
RENNIE HARRIS PUREMOVEMENT Rome & Jewels 8:00 PM					RENNIE HARRIS PUREMOVEMENT Rome & Jewels 2:00 PM 8:00 PM	
11	12	13	14	15	16	17
THE RODNEY MARSALIS PHILADELPHIA BIG BRASS A Very Brassy Christmas 7:00 PM					THE CROSSING @ CHRISTMAS 7:00 PM	
18	19	20	21	22	23	24
25	26	27	28	29	30	31

The holiday season brought the return of the annual *A Toast to Dear Old Penn* student showcase at Carnegie Hall. The in-person performance was livestreamed for the first time through support from the Penn Performing Arts Initiative. The evening featured performances by Bloomers Comedy, Dischord A Cappella, The Excelano Project, Mask and Wig, Onda Latina, Penn Dhamaka and PennYo A Cappella.

Also in December, we were thrilled to hold the first in-person Powell-Vandever Dance Masterclass since February 2020. Students from Penn and University of the Arts came out to tap with the fantastic Claudia Rahardjanoto from Dorrance Dance.

And now in its fourth season, student interest in serving on the PLA Executive & Artistic Director's Advisory Council remains strong. This year, we welcomed 17 council members, who collectively represent a wide range of majors, backgrounds, and experiences with performing arts.



SUSTAINING A
THRIVING PERFORMING
ARTS COMMUNITY

SUSTAINING

SUPPORTING

Jazz guitarist Pasquale Grasso performed as part of our 21/22 season digital series.

SUPPORTING SOME OF THE BEST
TALENT IN THE WORLD THROUGH
EXPERIMENTATION AND INNOVATION

JANUARY 2023

SUN	MON	TUE	WED	THU	FRI	SAT
1 NEW YEAR'S DAY	2	3	4	5	6	7
8	9	10	11	12	13 ARNO SCHUITEMAKER If You Could See Me Now 8:00 PM	14 ARNO SCHUITEMAKER If You Could See Me Now 2:00 PM 8:00 PM
15	16 MARTIN LUTHER KING, JR. DAY	17	18	19	20 DANCE THEATRE OF HARLEM 8:00 PM TEATRO DELLE ALBE fedeli d'Amore 8:00 PM	21 DANCE THEATRE OF HARLEM 2:00 PM 8:00 PM TEATRO DELLE ALBE fedeli d'Amore 8:00 PM
22	23	24	25	26	27 BENJAMIN BAGBY'S BEOWULF 8:00 PM	28
29 ACROBUFFOS Air Play 3:00 PM	30	31	1	2	3	4

In January 2022, we continued our digital series, comprised of four hybrid events designed for the virtual stage while also offering a unique behind-the-scenes experience for those attending in-person at the theatre. Challenging traditional expectations of performing arts experiences, the series explores performance in a world changed by the pandemic.

The series featured the Campbell Brothers, Joel Ross & Gabrielle Garo, Nora Brown, and Pasquale Grasso & Ari Roland. Each performance included an INSIGHTS Q&A with participation from in-person and virtual audience members. We were pleased to welcome the director of the Penn Jazz Ensembles and Penn alum Dan Paul, C’02 to moderate two of the discussions.

In total, 21/22 season livestreams were seen over 6,800 times. In addition to our digital programming, other livestream events included those by the Sachs Program for Arts Innovation/Fine Arts Department, the Music Department, and Penn Center for Experimental Ethnography, as well as a variety of extra-curricular student groups.

ANCHORING

ANCHORING STUDENT PERFORMANCES
THROUGH ACCESS TO OUR STATE-OF-THE-ART
VENUES AND TECHNICAL RESOURCES



AMPLIFYING THE REACH
OF STUDENT PERFORMING ARTS
GROUPS BEYOND CAMPUS

AMPLIFYING

Onda Latina, one of the student groups whose production was livestreamed in the 21-22 academic year.

FEBRUARY 2023

SUN	MON	TUE	WED	THU	FRI	SAT
29	30	31	1	2	3 SÔ PERCUSSION & CAROLINE SHAW 8:00 PM	4
5	6	7	8	9 VOCES8 7:30 PM	10 MARTHA GRAHAM DANCE COMPANY 8:00 PM	11 MARTHA GRAHAM DANCE COMPANY 2:00 PM 7:00 PM
12	13	14	15 NEGRO ENSEMBLE COMPANY World Premiere Play 7:30 PM	16 NEGRO ENSEMBLE COMPANY World Premiere Play 7:30 PM	17 NEGRO ENSEMBLE COMPANY World Premiere Play 8:00 PM	18 NEGRO ENSEMBLE COMPANY World Premiere Play 2:00 PM 8:00 PM
19	20	21	22	23	24	25 ULYSSES OWENS JR. & GENERATION Y 8:00 PM
26	27	28	1	2	3	4

Student performing arts productions returned in full force in FY22, with 46 performances in the Annenberg Center theatres. We welcomed over 10,000 in-person audience members for student performances, the majority of which were fellow Penn students, along with a sprinkling of family and friends.

Building on the success of our digital series, and in response to requests from students, families and alumni, the 21/22 academic year also saw Penn Live Arts start to provide increased capacity for livestreaming student productions.

Supported by Penn Live Arts professional production staff, these livestream performances reached 987 unique households and were watched nearly 3,500 times between September and June. Livestreams included performances by ATMA, Bloomers, Dischord, Excelano Project, Glee Club, Mask & Wig, Off the Beat, Onda Latina, Penn Dhamaka, Penn Singers, Penn Yo, and WAVE.

GATHERING

GATHERING ALUMNI WITH
A PASSION FOR THE
PERFORMING ARTS AT PENN

STRENGTHENING
CONNECTIONS THROUGHOUT
OUR CREATIVE COMMUNITY

STRENGTHENING

Students from the Penn Music Department Jazz Ensemble perform at Swing 46 Jazz Club.

MARCH 2023

SUN	MON	TUE	WED	THU	FRI	SAT
26	27	28	1	2 TABEA DEBUS, RECORDER Adam Cockerham, archlute 7:30 PM	3 ANAÏS MITCHELL 8:00 PM	4
5	6	7	8	9	10	11 THEO BLECKMANN Berlin: Songs of Love and War, Peace and Exile 8:00 PM
12	13	14	15	16	17	18
19	20	21	22	23	24 THE CROSSING PRISM Quartet 7:00 PM	25 FLIP FABRIQUE Muse 2:00 PM
26	27	28	29	30	31	1

In September, the PLA Board of Advisors was the first Penn Board to come together for an in-person board meeting since the start of the pandemic, gathering on the Annenberg Outdoor Plaza. October celebrated the Momentum 2021: Power of Penn Women Conference, in which PLA and Platt House partnered to present *Dance It Out*, a virtual salon session. Facilitated by PLA Board members Lynn Jerath, W'95, PAR'24 and Allison Dawn Powell, C'93, and Strictly Funk Dance Company founder Jennifer Weber, C'00, the session showcased current students from Penn Masti, Strictly Funk, and West Philly Swingers.

November brought Homecoming Weekend, which included a virtual Arts Panel, featuring PLA Executive & Artistic Director, Christopher Gruits, among other campus arts leaders. Chris also had the honor of presenting the Creative Spirit Award to Stephen Goff, AR'62, PAR'91, PAR'94 as part of the Alumni Award of Merit Celebration. Steve served as Managing Director at the Annenberg Center for 22 years.

And in April, the Penn Performing Arts Regional Council of NY hosted an outreach event at Swing 46 Jazz & Supper Club in NYC. With close to 100 alumni, students, parents, and friends in attendance, the exhilarating evening featured live music by the Penn Jazz Ensemble and a dance performance and lesson by West Philly Swingers.

INITIATING

INITIATING UNIQUE
PROFESSIONAL DEVELOPMENT
OPPORTUNITIES FOR STUDENTS



Student awardees at the 2022 Student Performing Arts Award Celebration.

LAUNCHING CAREERS THROUGH
ACCESS TO THE ARTS AND
ENTERTAINMENT INDUSTRY

LAUNCHING

APRIL 2023



SUN	MON	TUE	WED	THU	FRI	SAT
26	27	28	29	30	31	1
2	3	4	5	6	7	8
9	10	11	12	13	14	15
16	17	18	19	20	21	22
23	24	25	26	27	28	29
30						

ARTURO O'FARRILL
The Afro Latin Jazz Orchestra
7:30 PM

PAUL TAYLOR DANCE COMPANY
8:00 PM

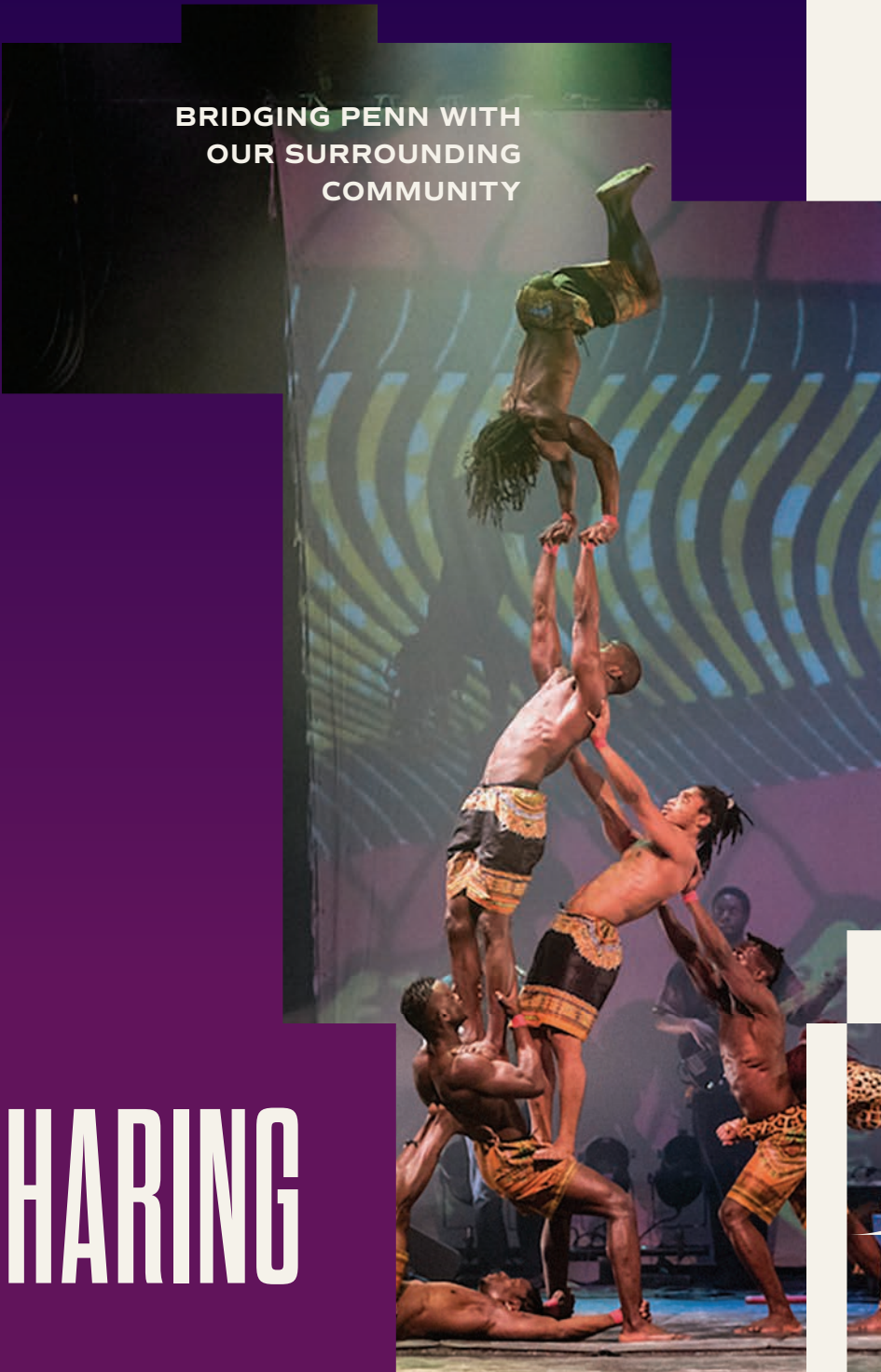
PAUL TAYLOR DANCE COMPANY
2:00 PM
PAUL TAYLOR DANCE COMPANY
8:00 PM

In Fall 2021, we assembled a working group with staff from Platt House, Career Services, and University Life as key partners for the PLA Career Development Initiative, which supports internship placements in the arts and entertainment industry. We also convened the PLA Director's Council for meetings in NYC and LA to share details about the program launch, resulting in several summer 2022 internship opportunities.

During the year, students pursued informational interviews and attended alumni events to build a network of professional opportunities. In May, we presented three Penn Live Arts grant awards to students to offset the costs of summer internships. Hosted by Platt House, the awards ceremony also presented students with the Stephen Goff Award, Wallace Award, Whinnery Award, Platt House Senior Spotlights, and Fresnel Award for Outstanding Contributions to the Tech Community.

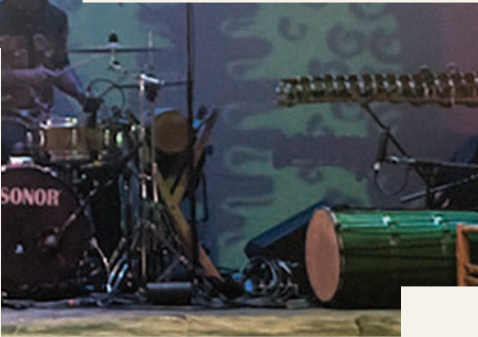
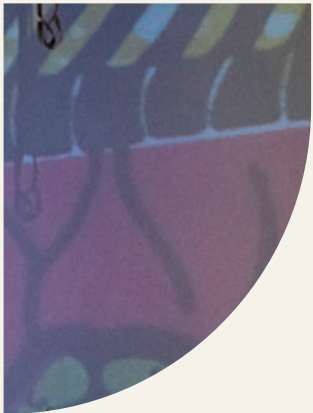
"Working at Penn Live Arts has been one of the most special aspects of my Penn experience. Over three years, I explored my professional interests and gained the confidence to develop my skills. I decided to work for PLA because I was looking for experience in the arts, but I gained so much more. As I pursue a marketing career in the media and entertainment industry, I am confident that my experience at PLA will be instrumental in building my path."
— Fernanda Brizuela, C'22





BRIDGING

SHARING THE ARTS
WITH OUR YOUNGEST
NEIGHBORS AND FRIENDS



SHARING

Kalabanté, the anchor ensemble of the 2022 Philadelphia Children's Festival.

MAY 2023

SUN	MON	TUE	WED	THU	FRI	SAT
30	1	2	3	4	5 NRITYAGRAM DANCE ENSEMBLE & CHITRASENA DANCE COMPANY Ahuti 8:00 PM	6 NRITYAGRAM DANCE ENSEMBLE & CHITRASENA DANCE COMPANY Ahuti 2:00 PM
7 GEORGE HINCHLIFFE'S UKULELE ORCHESTRA OF GREAT BRITAIN 7:00 PM	8	9	10	11	12 PENN ALUMNI WEEKEND	13 PENN ALUMNI WEEKEND
14 PENN ALUMNI WEEKEND	15 PENN COMMENCEMENT	16	17	18	19 JULIANNA BARWICK 8:00 PM	20 PHILADELPHIA CHILDREN'S FESTIVAL
21 PHILADELPHIA CHILDREN'S FESTIVAL	22 PHILADELPHIA CHILDREN'S FESTIVAL	23 PHILADELPHIA CHILDREN'S FESTIVAL	24	25	26	27
28	29 MEMORIAL DAY	30	31	1	2	3

Following a two-year hiatus, the Philadelphia Children's Festival returned in May with two nearly sold-out performances of Kalabanté's *Afrique en Cirque* and The Amazing Max. With 1,041 attendees, the Festival also featured a free outdoor music concert and entertainment, and continued our tradition of offering interactive activities with local arts organization partners.

In lieu of school groups attending through the Student Discovery Series, which resumes in the 22/23 school year, we produced a full-length video recording of Kalabanté and worked with Penn Graduate School of Education to distribute it to local schools as a free virtual field trip. The recording of Kalabanté's performance was viewed in over 50 classrooms across 17 Philadelphia schools.

The 21/22 season was also the official launch of our new contemporary circus series, featuring Kalabanté, Circa, and Cirque Mechanics. Though not exclusively for youth, the series aims to establish ongoing professional cirque programming in Philadelphia and responds to increasing interest from our family audience.

WELCOMING

WELCOMING GUESTS FROM PENN,
PHILADELPHIA, AND BEYOND



OFFERING UNPARALLELED
PROFESSIONAL EXPERTISE,
SUPPORT, AND HOSPITALITY

OFFERING

Terrell Stafford performs with the Philly POPS Jazz Orchestra of Philadelphia, an FY22 guest event.

JUNE 2023

SUN	MON	TUE	WED	THU	FRI	SAT
28	29	30	31	1	2 CRAIG TABORN 8:00 PM	3
4	5	6	7	8	9 SWING OUT 8:00 PM	10 SWING OUT 2:00 PM 8:00 PM
11	12	13	14	15	16	17
18	19 JUNETEENTH	20	21	22	23	24
25	26	27	28	29	30	1

After ceasing operations in March 2020, our rentals program reopened in August 2021 and over the year, managed more than 100 guest events attended by 21,000 people. We also welcomed two exciting new clients, The Philly POPS and the University of the Arts School of Dance, deepening our support of Philadelphia’s creative community and sharing our stages with local artists.

Guest rental activity grew significantly as comfort with gathering in person increased, with spring events increasing 65% over the fall schedule.

FY22 brought new Penn clients and events as well, including the School of Arts & Sciences Graduate Student Graduation, University Diversity Supplier Expo & Forum, and the Wharton Communications Program. This year, we also hosted Penn’s 25th Reunion and numerous commencement events for the 2020, 2021, and 2022 class years.

FOSTERING

FOSTERING A SENSE OF BELONGING
FOR ARTISTS, PATRONS, STUDENTS,
AND OUR GREATER COMMUNITY



Philadelphia choreographer Rennie Harris brought the local premiere of *LIFTED*.

EMBRACING ACTIONS TO BE A MORE
DIVERSE, INCLUSIVE ORGANIZATION

EMBRACING

JULY 2023

SUN	MON	TUE	WED	THU	FRI	SAT
25	26	27	28	29	30	1
2	3	4	5	6	7	8
INDEPENDENCE DAY						
9	10	11	12	13	14	15
16	17	18	19	20	21	22
23	24	25	26	27	28	29
30	31					

In 21/22, we continued to build on our commitment to inclusion and access, furthering our legacy of celebrating diversity over the last five decades. In partnership with the University's Office of Affirmative Action, our staff engaged in unconscious bias training in fall 2021. We were also one of the first departments on Penn's campus to adopt a Diversity Hiring Initiative and began applying this bias-limiting approach to our hiring process.

We also joined KultureCity, the nation's leading nonprofit on sensory accessibility and acceptance for those with invisible disabilities. Certification through KultureCity provides training for our staff to offer services and support, such as a quiet space for audience members who need to step out of an event. We will also start to provide sensory bags which are used to lessen the sensory overload and a social story for patrons to be able to see the venue ahead of their visit.

Finally, we redesigned our West Philly Welcome program (previously West Philly Rush) to be more accessible, shifting the purchasing period from a "rush" model to available any time, and permitting ticket purchases online as opposed to just in-person at the Annenberg Center. We are thrilled to report that we've seen a 241% increase over our last full season in FY19.

EXPANDING OUR CENTRAL ROLE
SUPPORTING CULTURE AND
CREATIVITY ON CAMPUS



ENHANCING

Artist Mark Stockton worked on-site in the Arts Lounge during his exhibition *100 People*. Photo by Jaime Álvarez.

EXPANDING

ENHANCING OUR SPACE AS
A CROSSROADS FOR PENN’S
MULTIDISCIPLINARY ARTS
ENVIRONMENT

AUGUST 2023

SUN	MON	TUE	WED	THU	FRI	SAT
30	31	1	2	3	4	5
6	7	8	9	10	11	12
13	14	15	16	17	18	19
20	21	22	23	24	25	26
27	28	29	30	31	1	2

Our collaboration with the Sachs Program for Arts Innovation deepened in 21/22 as we launched the Arts Lounge in the Feintuch Family Lobby of the Annenberg Center, a new hub for the creative community, co-developed and managed by Sachs and PLA. Focused on increasing visibility for the arts at Penn, the Arts Lounge hosted 10 public events and featured two art exhibitions: Martha Rich (MFA’11): *It goes by fast*, and Mark Stockton: *100 People*.

We facilitated partnerships with colleagues across departments to advance plans for a deeper alignment around supporting the creative arts on campus. The first of several phases is an integrated fundraising model for performing arts at Penn, effective FY23. This new model aligns strategic priorities across Penn Live Arts, Platt House, and University Life, ensuring clear paths for ongoing support of performing arts programs and activities at Penn.

Finally, opening our doors to cross-disciplinary collaborations also brought the Weitzman School of Design into the Annenberg Center as we piloted the Fine Arts Department’s use of our scene shop. This new partnership provides enhanced support and associated teaching space to the visual arts curriculum at Penn.

21/22 SEASON BY THE NUMBERS

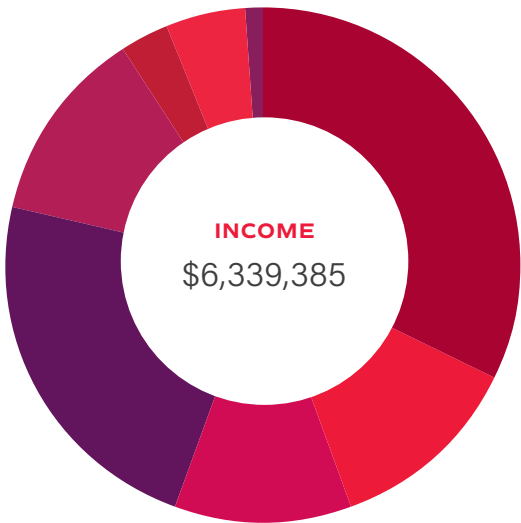
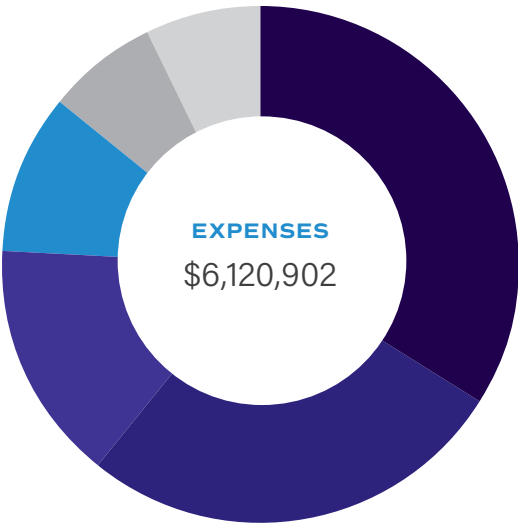


Cécile McLorin Salvant, one of our first artists to perform for in-person audiences since the onset of the pandemic.

- 10,284 tickets sold for student performing arts performances
- 6,800 views of Penn Live Arts livestreams
- 2,180 Penn students, parents, alumni, faculty, and staff attended our presenting series
- 1,876 individual subscribers joined us for the 21/22 season
- 241% increase in West Philly Welcome patrons
- 28 student workers across departments
- 19 premieres and debuts curated by Penn Live Arts

FY22 FINANCIALS

Penn Live Arts is sustained through a mix of contributed and earned income. We count on your generosity and support to make the performing arts accessible to all in our community.



EXPENSES

34% University Support Facility Advance	\$2,051,000
27% Programming	\$1,669,421
15% Production	\$926,445
10% Marketing	\$633,389
7% Administration	\$440,651
7% Fundraising	\$399,996

INCOME

32% University Facilities Advance	\$2,051,000
12% Guest Rentals	\$770,263
11% Ticket Revenue	\$681,316
23% Individual Giving	\$1,454,443
12% University Support	\$766,000
3% Other Income	\$187,820
5% Foundation & Government	\$329,212
1% Endowment	\$59,331
0.39% Corporate	\$25,000
0.24 % In-kind	\$15,000

*FY22 capital gifts and special projects funding have been excluded from the above chart, as funds are earmarked for use at a later date.

PENN LIVE ARTS

BOARD OF ADVISORS

Andrew Brownstein, Esq., C'75, W'75,
WG'76, PAR'12, PAR'14

Anar Chudgar, W'03

Richard D. Feintuch, Esq., W'74, PAR'05,
PAR'08

Laurie Feltheimer, PAR'22

Joseph B. Glossberg, W'63, WG'65

Stephanie Pottruck Goldman, C'99

Laura Lazarus Goldstein, C'91, PAR'23

Christopher A. Gruits, *ex-officio*

Lynn J. Jerath, W'95, PAR'24

Arthur M. Kaplan, Esq., C'67

David J. Katz, C'89

Steven G. Kobre, Esq., C'90, PAR'25,
board chair

Kyle S. Kozloff, W'90, PAR'25

Stephanie Kramer, PAR'16, PAR'19

Heather Zeegen Lieberman, C'94

Liz Magill, J.D., *ex-officio*

Edward P. Mally, W'83, PAR'13, PAR'15

Joann Mitchell, *ex-officio*

Jason M. Pantzer, C'93, PAR '25, PAR '26

Julie Beren Platt, C'79, PAR'05, PAR'08,
PAR'12, PAR'21

Allison Dawn Powell, Esq., C'93

Adriana Riviere-Badell, Esq., W'00

Wendy Sassower, C'94, PAR'24

Katherine Stein Sachs, CW'69, PAR'95,
PAR WG'06, PAR WG'10

Adele Schaeffer, CW'55, *emeritus*

Lincoln Cameron Singleton, W'93

Marla Weinstein Wasserman, Esq.,
C'90, L'93, PAR'20

Paul Wiggin, W'82, WG'88

Dr. Beth A. Winkelstein, *ex-officio*

DIRECTOR'S COUNCIL

Jennifer F. Bilfield, C'85

Richard Gay, W'90

Naomi Grabel, C'86

Todd Haimes, C'78

Mike Karz, C'89, W'89

Mark Kaufman, C'89, PAR'23

Richard Klubeck, PAR'22

Todd Lieberman, C'95

Marc Platt, C'79, PAR'05, PAR'08, PAR'12,
PAR'21

Nikki Silver, C'89, PAR'20, PAR'21, PAR'25

David Stern, C'89, ENG'89

Randy Swartz, C'67

Vivek J. Tiwary, C'96, W'96

Leslie Urdang, C'76

Greg Wattenberg

Harold Wolpert, C'88

David Zippel, C'76

PENN PERFORMING ARTS REGIONAL COUNCIL OF NEW YORK

Amalia Delicari, C'95

Ankit Dhir, C'10, W'10

Todd Donovan, ENG'95

Maria-Lisa Farmakidas, WG'03

Stacy Friedman, C'93

Sarah Marcus Hansen, C'10

Andrew Marolda, W'92, *co-chair*

Karen Greve Milton, C'78

Allison Powell, C'93, *co-chair*

Carolyn Rubin Shapiro, WG'98

Ian Seltzer, C'09

Samir Sheth, W'08

PENN PERFORMING ARTS REGIONAL COUNCIL OF LOS ANGELES

Allison Druyanoff, C'92

Fielding Edlow, C'95

Joshua Goldsmith, C'92

Kyle S. Kozloff, W'90, PAR'25

Heather Lieberman, C'94

Karen Macarah, C'96

Matt Rosler, C'96

Corey Singer, C'10

Mark Zachary, C'91

EXECUTIVE & ARTISTIC DIRECTOR'S STUDENT ADVISORY COUNCIL

Carson Abt, W'23

Devorah Bass, C'23

Evan Bean, ENG'23

Fernanda Brizuela, C'22

Eliza Cohen, C'24

Juliet Dempsey, C'24

Zoe Goldstein, C'23

Erin Hayes, C'22, G'22

Drew Korn, C'22

Megan Lentz, C'22

Lance Lunceford, W'22

David McCabe, C'23

Helena Muñoz, C'25

Kaitlin Rowan, C'22

Morgan Singer, C'23

Blake Velick, C'23

Xandro Xu, C'25

Marissa Yee, W'25

Dr. William Yi, GED'22

THANK YOU TO OUR GENEROUS DONORS

PENN LIVE ARTS WISHES TO RECOGNIZE THE FOLLOWING
INDIVIDUALS AND INSTITUTIONS FOR THEIR VITAL SUPPORT
OF OUR MISSION AND PROGRAMMING.

It is because of our generous donor community that we are able to share innovative dance, music, theatre, and film with diverse audiences across the region. Thank you for championing the arts and sharing in our celebration of more than 50 years of the performing arts at Penn and in Philadelphia.

This list recognizes gifts received between July 1, 2021 and June 30, 2022.
*Indicates a member of the Penn Live Arts Board of Advisors.

FOUNDERS CIRCLE (\$50,000+)

Anonymous
Association of Performing Arts Professionals
Elise Jaffe Brownstein & Andrew R. Brownstein* Esq.
Anar Chudgar* & Dale Andrew Stohr
Merry H. Feintuch & Richard D. Feintuch*, Esq.
Laurie Feltheimer* & Jon Feltheimer
Madeleine Condit & Joseph B. Glossberg*
Stephanie Pottruck Goldman* & Aaron M. Goldman
Laura Lazarus Goldstein* & Saul Goldstein
Karyn Kornfeld & Steven G. Kobre*, Esq.
Stephanie B. Kramer * & Ronald J. Kramer
Heather Lieberman* & Todd Lieberman
Tricia C. Pantzer & Jason Michael Pantzer*
Julie Beren Platt* & Marc E. Platt
The Presser Foundation
Adriana M. Riviere-Badell* & Jatniel Badell
Katherine S. Sachs*
Wendy Elias Sassower* & Edward Sassower
Marnie Naiburg-Smith & Jeffrey Chad Smith
Virginia C. Mulconroy Fund of The Philadelphia Foundation
Lisa P. Wiggin & Paul R. Wiggin*
Zellerbach Family Foundation

PRODUCERS CIRCLE (\$25,000 TO 49,999)

Anonymous
Lynn Jerath* & Kunal Jerath
Arthur M. Kaplan*, Esq. & R. Duane Perry
Aaron J. Kirkbride
Emme & Kyle Kozloff*
Edward P. Mally*
Allison Powell* & Thomas Scott Vandever
Marla Weinstein Wasserman*

INVESTORS CIRCLE (\$10,000 TO \$24,999)

Janet & David M. Brashear
Jeannine & Thomas Carr
Lisa & James J. Fuld Jr.
JoAnn Harmon & J Adam Hitt
Sheri Katz & David Katz*
Jodi L. & Rick S. Kirkbride
Jordan Kirkbride
Thomas J. Krane
Frank F. Lang
Hannah M. McDonnell & Adam P. Savitt
Mid-Atlantic Arts Foundation
National Endowment for the Arts
Pennsylvania Council on the Arts
The Sheraton Hotel University City

DIRECTORS CIRCLE (\$5,000 TO \$9,999)

Fielding Edlow
Stacy S. Friedman
Cathy & Joshua W. Goldsmith
Karen Agam Macarah
Adam D. Mally
Albert F. Mally Revocable Trust
Diane Bocchinfuso Marolda & Andrew V. Marolda
Joann Mitchell*
Nikki & Brad Silver
Tamala Singleton & Lincoln Cameron Singleton*
Walter J. Miller Trust
Mina T. & Gregg Wattenberg

ARTISTS CIRCLE (\$2,500 TO \$4,999)

Anonymous
David Berliner
Amalia Delicari & Wilfredo Ortiz
Todd C. Donovan
Allison Cole Druyanoff & Michael Druyanoff
Maria-Lisa C. Farmakidis
Rachael S. & Mark L. First
Karen Greve Milton, Esq.
Kevin C. Ng
Québec Cultural Ministry
Carolyn & Aaron Shapiro
Marc J. Zachary

MEMBERS CIRCLE (\$1,000 TO \$2,499)

Anonymous
Karen & Wayne Barber
Meg & Christopher A. Gruits*
Willo Carey & Peter A. Benoliel
Christian R. & Mary F. Lindback Foundation
Joan E. Dejean
Dolfinger-McMahon Foundation
Elise F. Drake
Raymond Giuffrida
Alon G. Gur
Amy Gutmann & Michael W. Doyle
Mark E. Haskins, V.M.D. PhD
Jessica Heidenberg Heyer & Peter J. Heyer
Pauline Imberman
Elisa G. & Stephen N. Karp
Myles L. Karp
Cecilia Horwitch Karz & Michael D. Karz
James B. Kuklinski
Miodrag Kukrika
Carol Leiper
John T. Lowey
Riley E. McCluskey
Emily M. Orrson
Brian E. Powers
Matthew E. Rosler
Patricia D. Saddier, MD, Ph.D.
Ian A. Seltzer
Kathryn S. Stripling
Peter Tang
Jamie L. & David Reid Vann
Maxfield Victor
Susan M. Walla
David J. Zion

DONORS \$500 TO \$999

Gregory S. Barber
Shepard T. Moore-Berg
Ellen Edelson Bortz & Jonathan E. Bortz
Janice Ciampa
Denise Haines & Robert H. Pollack
Rachel Harad
Carolyn B. Kamara
Mary M. Keenan
Adam J. Leslie
Kathleen N. Massey, Esq. &
James B. Blaney, Esq.
Jennifer & Suneel Niren Nagda, MD
Bina K. & Daniel K. O'Neill
Hannah B. Platt & Avery L. Rosin
Jordan Stone
Elaine & Patrick J. Sweeney
Alexander C. Utay
Richard W. Woodville
Elisa & Brian Lee Zied
Allison S. Zuckerman

DONORS \$250 TO \$499

Anonymous
Jonathan E. Bernie
Carol Clampett Bergere
Peggy L. & Mark P. Curchack
Christine Deutsch
Gene F. & Charles D. Dilks
Karolina R. Ensor
Lisa & William Feldman
Todd J. Fieldston
Kylie Gemmell
Rhonda E. Green
Sarah Marcus Hansen
Jesse L. Herrmann
Rebecca Ichord
Noah Y. Keil
Margaret & Alexander Kerr, Esquire
William D. Lieser
Paul E. Orrson
Charlie Peck
Bonita L. Perry
Stacey Rappaport
Sahiba Sachdeva
Debra & Gregg Savitt
Samuel W. Shelley
Todd M. Shotz
Maureen & John F. Tierney
Blair K. Webb
Jill Rose Whitelaw, Esquire

DONORS \$100 TO \$249

Anonymous
Donald Ackerman
Leah Z. Apple
Penelope W. Ashman
Jackie Asplundh
George Benes
Karl Berger
Roy Biggs
Lewis Blynn
Peter V. Bodine, MD
Carole J. & Edward Boehner
Barry R. Brait
Lawrence Fisher Brass, MD
Barbara Bromfield
Erica E. Burden
Wanda Butler
Sarah Chang
Lynn A. Collins
Mitch Cooper
James Corry
Duval A. Courteau
Katherine Crabb
Francis E. Cunningham
Ann B. Delaura
William D. Dicecca
Eric Duell
Ann J. & Timothy Duffield
Charles Dunn
Maxwell K. Effron
Emilio Emini
James F. Ermilio, Esquire
Lisa A. Ernst
Jeff Evelhoch
Marie Fairchild
Wendy Feldman
Jonathan Frank
Dean H. Frankel
Jane L. & Charles W. Freeman
Sangeeta Garg, MD
Diana B. & James F. Giddon
Allie Gikes
Michele A. Goldfarb
Kathryn E. Goldrath
Noah S. Goldstein
Dilan Gomih
Naomi S. Grabel
Aliana M. Greenberg
Linda Gutzait
Jane Halpern
Sharon Harris
Ruben N. Henriquez

Willa J. Hightower
Hope B. & Leonard S. Hochster
Zachary R. Hochster
Brittany L. Hoffmann
Dianne E. Inniss
Vinay Rama Iyer
Nirlesh Jain
Karen Klaverkamp
Barbara & Robert Quinn Kreider, Esquire
Judith M. La Londe
Ryan A. Ladouceur
Elie Landau
Wendy Lathrop
Jong S. Lee
Brandon Levin
Harrison Lieberfarb
Susan Silberman Liebeskind &
Peter D. Liebeskind
William A. Loeb
Ariela P. Mabourakh, Esquire
John P. MacDuffie, Ph.D.
Roderick MacNeil
Ann S. Marcus
Howard R. Marcus
Lynn D. Marsden-Atlass
David J. Marston
Kenneth Maurer
James C. McCroskery
Mark Mendenhall
Jonah J. Meyerson
Joyce Miller
Sean M. Nadel
Sara Nerken
Kenneth Ng
Michael Nolan
Conor E. O'Brien
Debra O'Connor
Patience Okolie-Thompson, MD
Isabel Oliveres Tarragona
Tiffany Ortiz
Jennie Ostendorf
Joshua E. Oynick
Linda Paseltiner
Joanne Pendelton
Judith & Gerald J. Porter
Krista Reichard
Karen W. Ricketts
Alex M. Rieger
Sharon Y. Ritt
Mark Rivinus
Laurie Rosard
Steven Rosard
Anthony L. Rostain, MD

Tracy Russo
Lee Schneider
Linda Jean Schneider
Kevin R. Schreiber
Manav Segal
Jacob Shulman
Lewis Silverberg
Mary L. Silverstein
Corey G. Singer
Lisa Surnow
Aaron P. Tas
Elizabeth Ten Have
Jacqueline G. Tolcott
Maxine Traub
Nina Robinson Vitow
Kent Wagner
Stanley Ware
Crawford Williams
Sarah Willie-LeBreton
Samuel R. Winthrop
Leo M. Wolansky
Samantha Wyatt
Lee E. Yanco
Sandi Young
Lynn Zaffrin
Leslie Zahler
Diana A. Zalewski
Emma Zeger
Joshua I. Zelman

DONORS \$10 TO \$99

Anonymous
Zev Aaron
Andrew Adair
Tamara Adams
Maureen Alexander
Anand S. Amar
Sherman C. Aronson
Paul Sein Auh, Esquire
Vikram G. Balasubramanian
Kirstyn Ballard
Lisa M. Barnett
Anne-Marie Bauermann
William C. Baxter
Nichole Birmingham
Peter G. Bittar
Kenneth L. Bluford
Joe Bonus
Margaret A. Bowen
Pamela Boyer
George Bradt
Thomas Brennan
Samantha B. Bronner
Francene Brown
Catherine C. Carr, Esquire
Adele Carter
Ronalta J. Conn
Mark Conti
Romelie Coriolan
Charles D'Angelo
Stacey Davids
James Deddens
Leslie Delauter
Mary Dellavalle
Emily M. Demarco
Kelly Derickson
Jenifer W. & Thomas D. DiCamppli, Jr.
Helene L. Dow
Kathryn R. Doyle, Ph.D.
Mitchell Drew
Sam Duplessis
Kurtis Egan
Helen Egner
Michael Eisenhard
Evan Ercolano
Deirdre Farmbry, EdD
Maria Ines Ferre
Louise M. Fischer
Nicole M. Fitzpatrick
William Foy, Jr.
Robert Friedlander
Judith Friedman

Christine R. Fryer
Janet-Lynn & Thomas A. Garrabrant
Margaret A. Geist
Evalyn B. Gelhaus
Jackie Gelman
Leah M. Geoghegan
Ancil R. George
Laura Kies Gever
Neil C. Gever, Esq.
Linda Girard
Sojourner Jane Gleeson
George Glover
Fredrick Jacob Gluckman
Audrey Golub
Brett Gordon
Janell Gotier-Juanda
Lisa S. Greene
Samuel Haber
Anthony Haley
Katherine Hall
Jiatong Han
Johnathan M. Hargest
Sabrina Harrell
Jazmine Harris-Branch
Kathleen Harrod
Lauren G. Hedvat
Shannon H. Hedvat, Esquire
Elisa Hibbs
Edward S. Hochberg
Cindy Hoose
Pearlie Howard
Edward B. Hsiang
Zequesha Hutton
Margaret Innes
Nancy Isaac Simering
Michael Jones
Debbie Kaba
Brandon D. Kanell
Yasemin & James Kanell
Lucy C. & Carl E. Karlsson, Jr.
Sally Katz
William Keeney
James Kennedy
Lawrence A. Kennedy
Jibran N. Khan
Meghn Khanna
Caroline H. Kim
Jungeun Kim
Yvonne M. Kita
Allison E. Kodan
George Korein
Kedar Kulkarni
Beckie Yoder Lamborn

Sharon Lauro
Paul Leath
Olivia C. Lenz
Joan B. Levine, D.D.S.
Samuel Lewis
Katie Li
Barbara Liberi
Elsie Libertini
Talia Lieber
Leslie Locke
Adam M. Lyman
Laura Lynch
Christine Macarthur
Harrison J. Mace
Erin Mangs
Elle Mannion
Kathleen Margay
Cindy L. Marsland
Joanne E. Mazzucco
Elizabeth James W. McDonald IV
Brian McGlynn
Michele McNamara
George McNeely
Jo Merchant
Susan Meyer
David Michael
Cynthia Miller
James Milliken
Emma F. Mlyniec
Emoral N. Moore
Mary C. Mullins
Jerome Napson
Ish Narula
Marta Nolan-Alley
Kathleen G. Noonan, JD
Jacob D. Nussbaum
Lauren T. Ortiz, DMD
Frank Pace
Sandra Parrotto
Isabella J. Perez
Robert Peroudeau
John Piccolini
Annette R. & Charles Jeffrey Pierce
Ben C. Piersall
Sarah Poirier
Rene R. Polutan
Joan Primavera
Diego Proano
Tyrone J. Quarterman
Amy Ralat
George P. Reese
Melissa Reyes
Jocelyn Robinson

Tracy & Philip S. Ross
Brian F. Rotatori
Josh Rubin
Rebecca & Andrew Sargent
Milan R. Savani
Maddie Savitt
Annette Scattoni
Bebe & Stacey Schwartz
Ms. Christine Schwartz
Heath Seiders
Jennifer E. Seiders
Suzanne Shannon
Letitia Shaw
Bharathi Shivakumar
Eileen J. Silver
David Philip Slotkin
Sharon Toback Slotkin
Richard Snow
Jeffrey Solarz
Heather Speirs
Lynn Stander
Deborah S. Steinsaltz Hochberg
Abigail Stone
Karyn Maria Astorga Sulit
Maria Suro
Marissa S. Suvall
Carrie M. Tabor
Jeff Tackes
Louis N. Tannen
Ganesa Sankaran Thangavel
Claudia Tienan
Keren Toledano
Gavin Turner
Liam E. Umbs
Sandra R. & Steven M. Velick
Arvind Venkataraman
Talya Melmed Waldman &
Alexander Waldman, D.M.D.
Elizabeth Walsh
Heather C. Wargo, MD
Monika K. Wasik
Marie A. Weaver
Lori Wood Weil & Parker A. Weil
Charlie Welch
Jeffrey L. Whitmer
He-Myong Woo
Nancy Wright
Susan D. Wrubel
Xuan Xu
Heidi & John Yin

PENN LIVE ARTS
UNIVERSITY of PENNSYLVANIA

Thank you for upholding the performing arts
in our Penn and Philadelphia community.

Make a gift:
PENNLIVEARTS.ORG/GIVE

Cover image: MOMIX's *Alice*